

COVID-19

CURRENT PROCEDURES

POSITIVE

- Individuals who test positive for COVID-19 are not permitted to come to work or school and are required to isolate for 5 days from the onset of symptoms (or 5 days from the date they were tested if asymptomatic).
- Based on updated CDC guidance, after those initial 5 days, if the positive individual remains asymptomatic or their other symptoms have improved (without fever or fever-reducing medication for 24 hours), he/she may return to work or school.
- In order to return on day 6, the positive individual must wear a mask on days 6-10 when around others to minimize the risk of transmission.

EXPOSED

- Individuals who are exposed to COVID-19 are permitted to attend school as long as they remain symptom-free without the use of medication and do not test positive for COVID-19.
- Per the WSD BOE decision in December 2021, the WSD will no longer contact trace or identify close contacts.

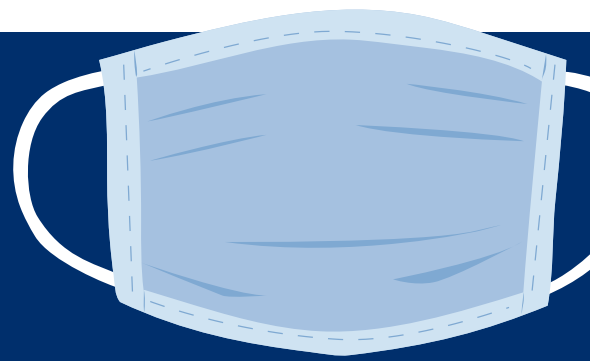
OTHER ILLNESS

- Stay home if you are sick.
- The District's communicable disease policies are outlined in WSD Policy and Regulation 2860 (for students) and 4820 (for staff). Individuals with symptoms of illness should remain at home until they are symptom-free for 24 hours without the use of medication. WSD Health Services staff may require any student suspected of having a contagious or infectious disease to be examined by a physician and may require a doctor's note prior to the student's return to school when there is a substantial risk of transmission of the disease in the school environment.

RECOMMENDATIONS

STAFF AND STUDENTS

- Wear a mask when social distancing is not possible.
- Stay updated on positivity rates within your building by referring to the WSD COVID-19 dashboard regularly.



PEOPLE WHO ARE EXPOSED TO COVID + INDIVIDUALS IN THEIR HOUSEHOLD

If the individual exposed is unvaccinated:

- Monitor closely for symptoms.
- Stay at home for 5 days past the date of last exposure.
- Get tested on day 5 before returning to school/work.
- Return to school/work on day 6 if asymptomatic.
- Wear a mask for days 6-10.

If the individual exposed is fully vaccinated (and boosted, if eligible):

- Monitor closely for symptoms.
- Get tested on day 5, if possible.
- Wear a mask for 10 days.

PEOPLE WHO ARE EXPOSED TO COVID + INDIVIDUALS WHILE AT SCHOOL OR WORK

Monitor closely for symptoms. | Get tested on day 5 if possible. | Wear a mask for 10 days.

PRACTICES

- Follow the Current Mitigation Measures.
- Follow the CDC guidance for COVID + individuals.
 - Exclude from work/school for 5 days
 - Require a mask for days 6-10
- Follow WSD 2860 and 4820 Policy and Regulation for communicable disease.
- Masking on district buses will continue to be required of students and drivers so long as the federal mandate remains in place.

- Notify families when their child has been exposed to a COVID +.
- Continue to collaborate daily with SCCDPH regarding positive students and staff.
- Maintain COVID-19 Dashboard.
- Follow MSHSAA's guidance. Must meet 5 day isolation requirement. Must be screened by a licensed healthcare professional. May begin the Return to Play stages/ progression during days 6-10 (must remain masked).

DISCONTINUED

Contact Tracing: Identify close contacts & require quarantines for individuals who would be considered close contacts to a person positive with COVID-19.